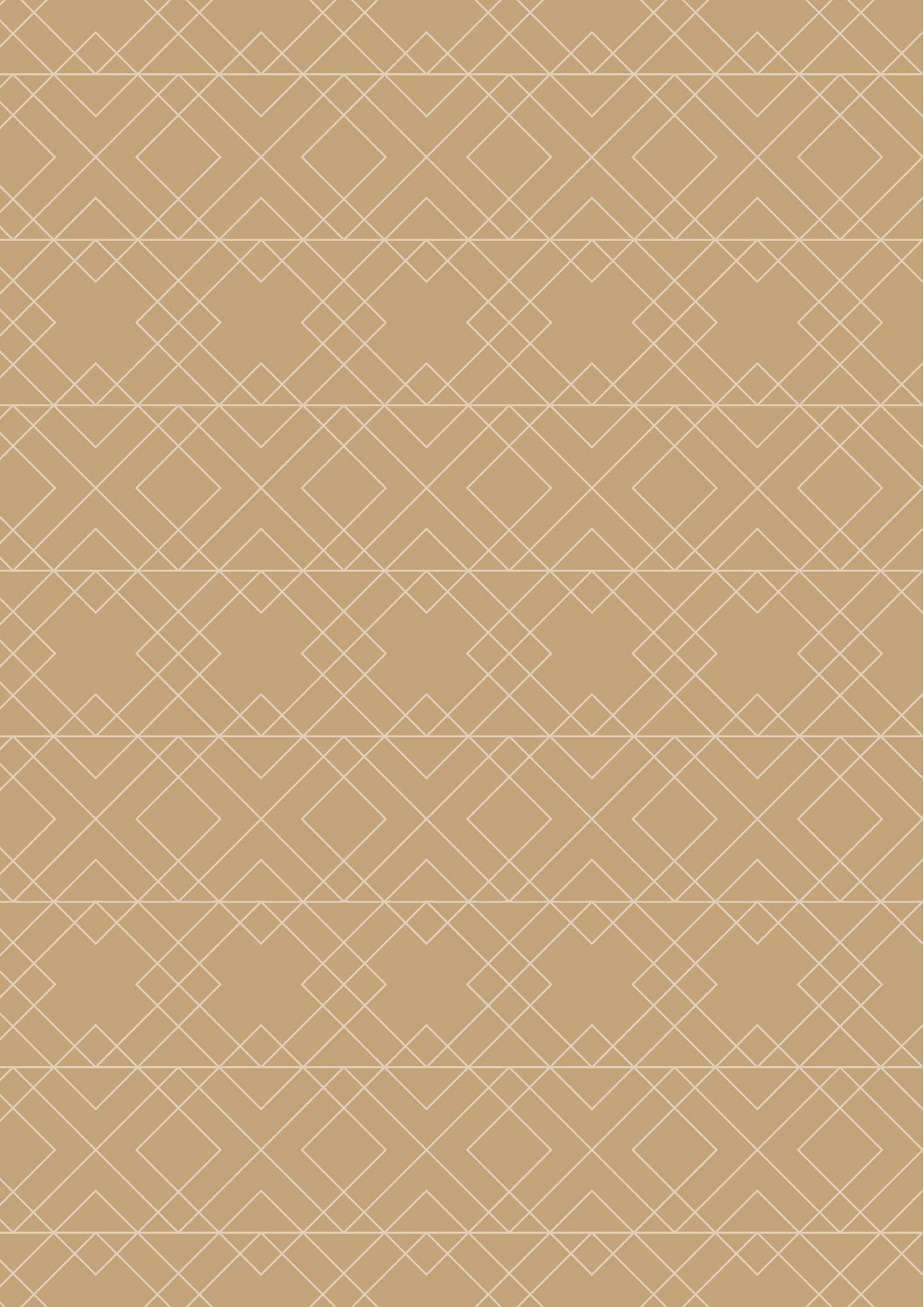


||
LUXE

321 HIGH ST



LOCATION
4 / 7

DESIGN
8 / 23

FLOORPLANS
24 / 29

TEAM
34

LIFESTYLE

YOU WILL WANT TO BE A PART OF

Just a short drive from the city and yet it feels miles away from the hustle and bustle, Templestowe Lower offers the best of both worlds.

Gorgeous large park lands and the freedom of the countryside views Templestowe Lower is one of Melbourne's hidden gems and the perfect place to call home.

Walking through one of the many walking tracks in Birrarung Park and Finns Reserve or picnicking in Ruffey Park, and taking in some retail therapy at nearby Westfield Doncaster Shoppingtown or the Pines Shopping Centre.

Being active is easy with so many areas to explore, running tracks and sporting facilities all close to your new home.



TEMPLESTOWE VILLAGE



PLACES TO RELAX



RUFFY LAKE PARK



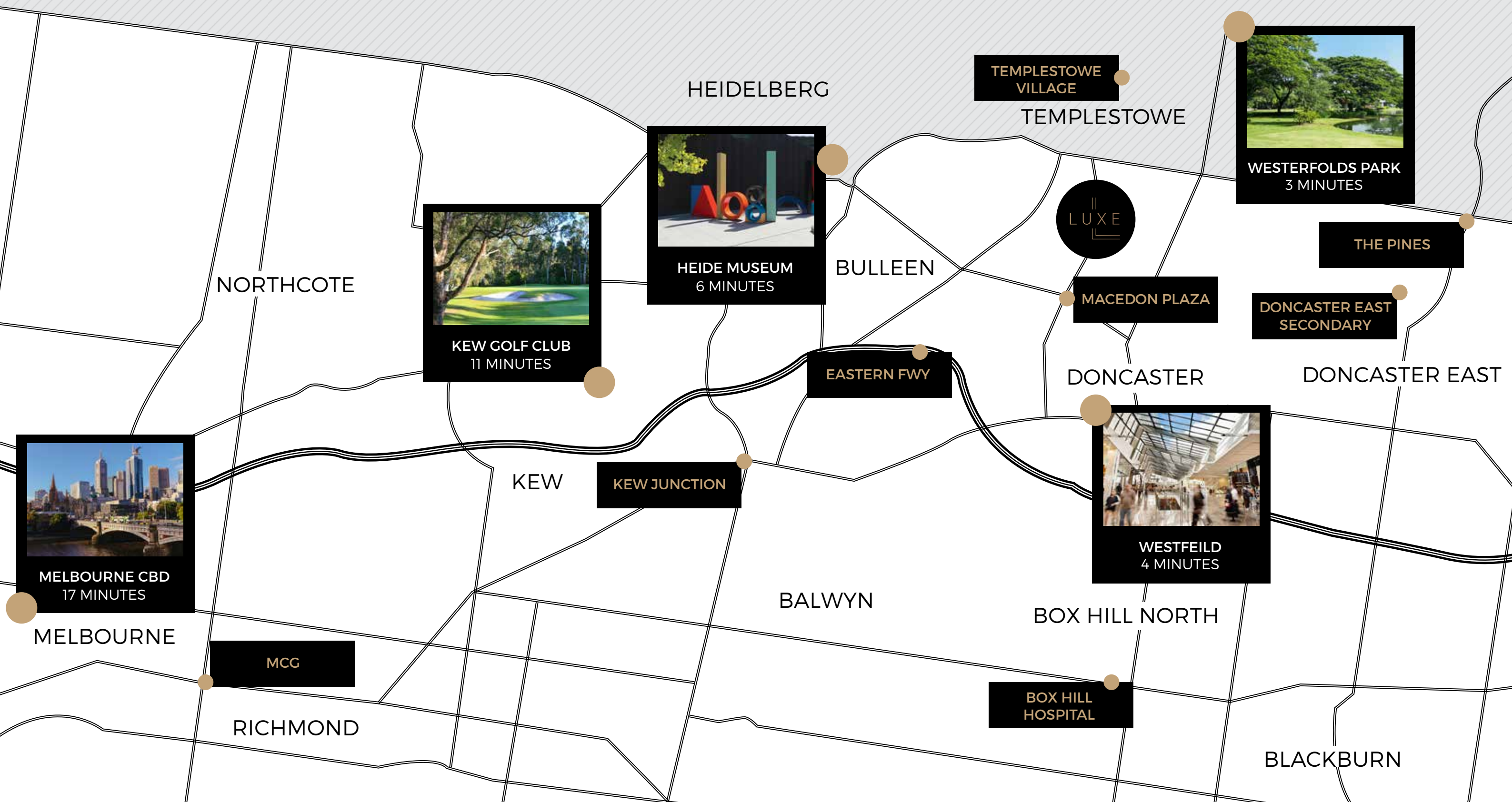
GREAT SCHOOLS



FREAH LOCAL SHOPPING



THE YARRA TRAIL



NORTHCOTE

HEIDELBERG

TEMPLESTOWE VILLAGE

TEMPLESTOWE

WESTERFOLDS PARK
3 MINUTES

THE PINES

DONCASTER EAST
SECONDARY

DONCASTER EAST

MACEDON PLAZA

DONCASTER

WESTFIELD
4 MINUTES

BOX HILL NORTH

BOX HILL
HOSPITAL

BLACKBURN

BULLEEN

EASTERN FWY

KEW JUNCTION

KEW

BALWYN

MCG

RICHMOND

MELBOURNE CBD
17 MINUTES

MELBOURNE



KEW GOLF CLUB
11 MINUTES



HEIDE MUSEUM
6 MINUTES





DETAILED

DESIGN TO ITS FINEST





DESIGN

Adepto Co is proud to introduce Luxe, six French provincial style town homes in one of Melbourne's most sought after suburbs, Templestowe, Lower.

Designed by Ikonomidies Reid in unison with CoLab Design Studios each elegant residence boasts large spaces, immaculate interiors and incredible views.

Luxe is inspired by the peaceful and picturesque lifestyle of the neighbourhood. This is a very rare opportunity to enjoy the very best at one new address.



HOME

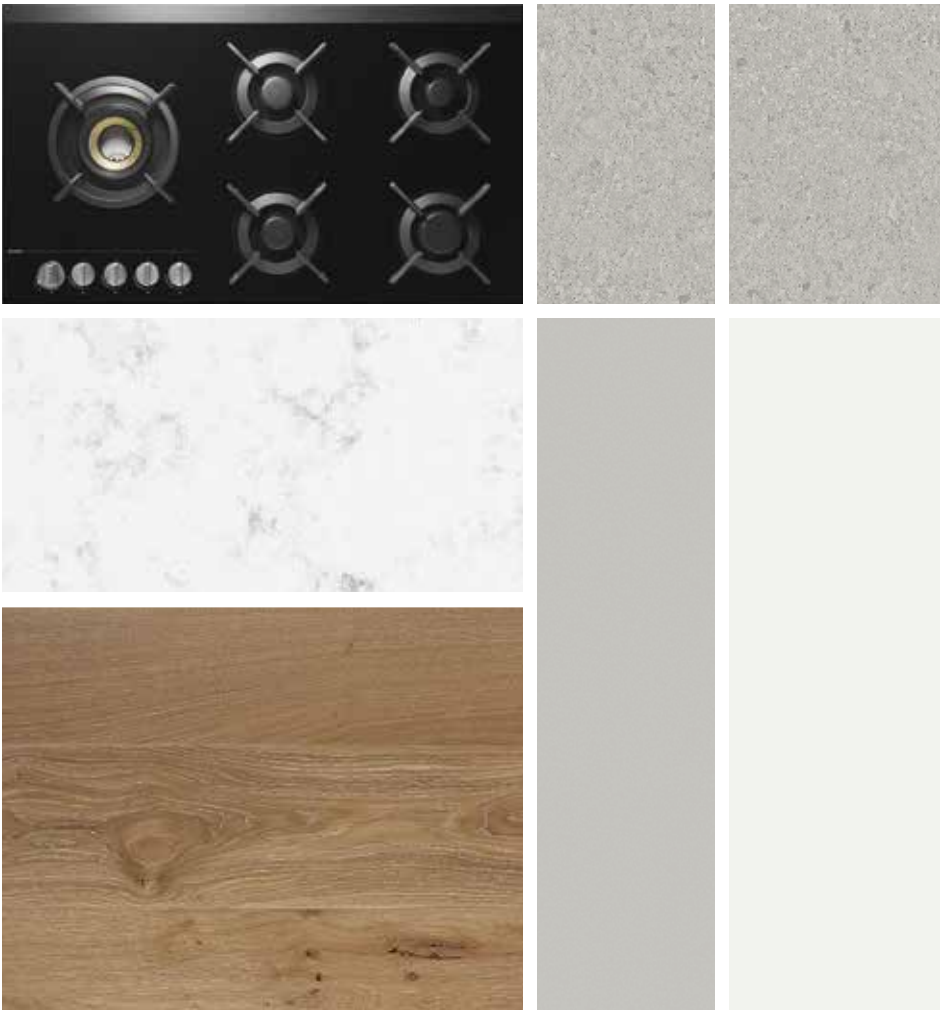
IS WHERE THE HEART IS

KITCHEN

The contemporary and relaxed styling of the kitchens at Luxe are spaces to enjoy with family and friends. Sitting on a lovely natural timber floor, which gives the area warmth, and a striking feature is the use of the timeless natural stone of granite. The kitchens themselves have a lovely mist hue, taking the direction for color from a neutral pallet that buyers can overlay with their own accent or styling for whatever their tastes may be.

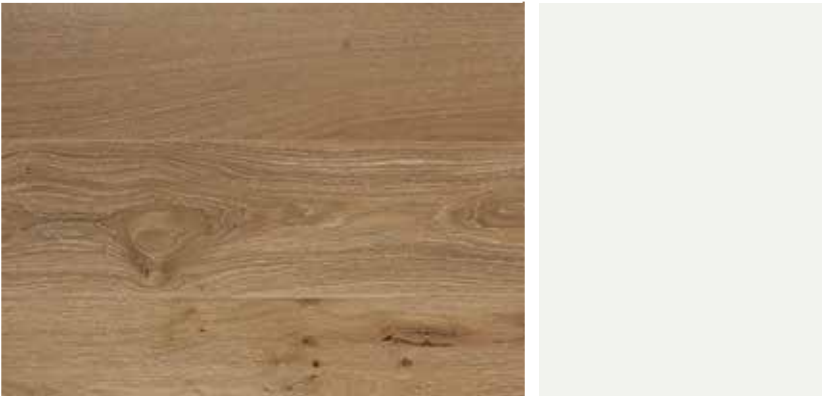


KITCHEN | ARTIST IMPRESSION



LIVING

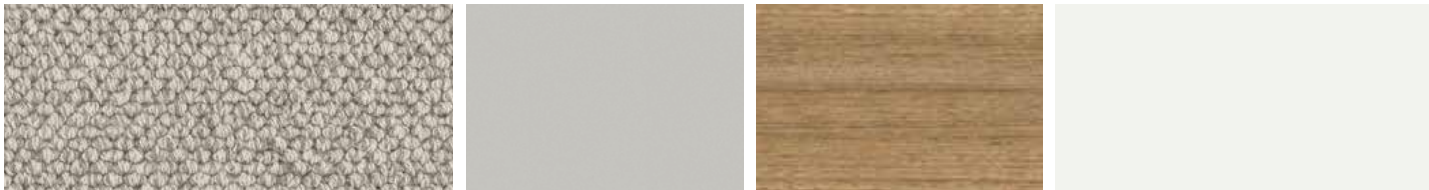
Luxe is designed for generational living where spaces have multiple functionalities. Luxe allows growing families to have their own areas such as a teenager's retreat, or an in-law retreat for extended families living under the one roof.





RETREAT

Luxe bedrooms are truly a retreat with space to relax.
The 100% wool carpets and magnificent walk in or in-built robes make the bedrooms a dream.





BATHROOM

The timeless direction of the design continues into the bathrooms which are moody intimate spaces. Luxe has warm mid-tone tiles - with the same wall tiles on the floor wrapping up along the wall which creates a strong ambience in the bathroom spaces that emphasizes a sense of calm and relaxation.

The neutral lovely soft pallet is all about relaxation and "retreat."



SPACE

ROOM TO GROW IN LUXURY AND COMFORT

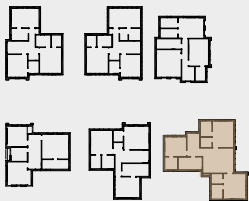
FLOORPLANS

Overall the floor plans in Luxe are extraordinary. In comparison to other developments the size of the living spaces right through to the bedroom and the bathrooms, everything is very, very generous in terms of proportion. All family scenarios are possible which is a huge bonus and rare for many of the developments on the market today.

Townhouse Number

01

Key Plan



Bedrooms Bathrooms Cars

04 04 02

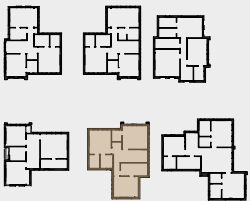
Total m²

459.16

Townhouse Number

02

Key Plan



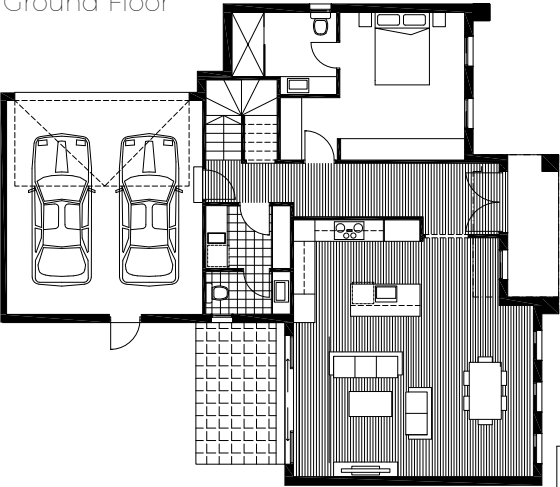
Bedrooms Bathrooms Cars

04 03 02

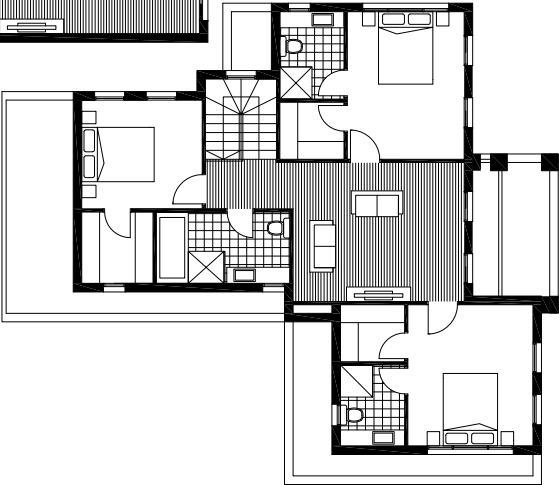
Total m²

258.13

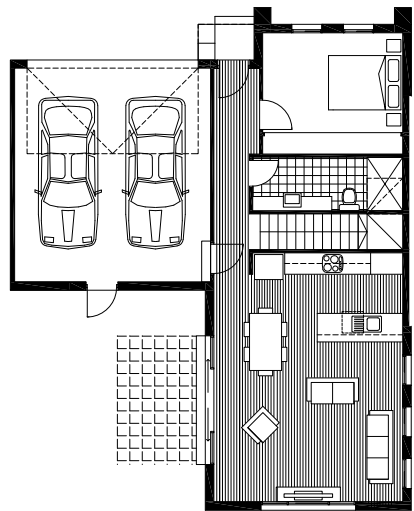
Ground Floor



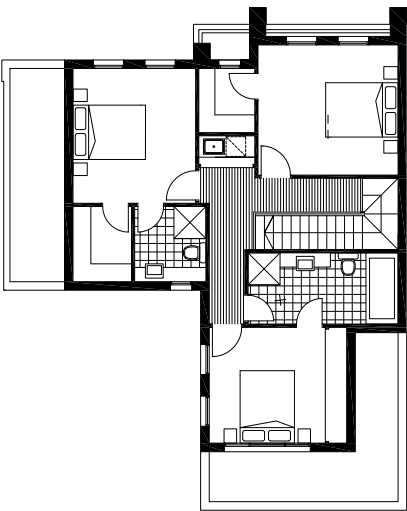
First Floor



Ground Floor



First Floor



Townhouse Number

03

Key Plan

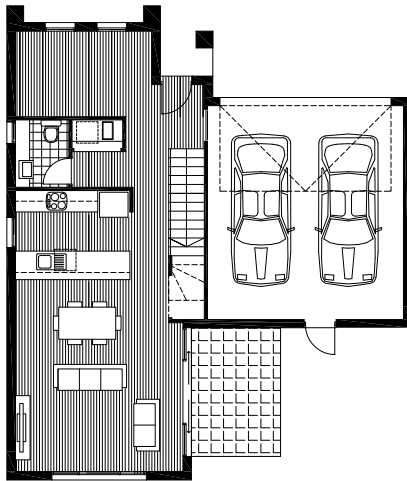


Bedrooms Bathrooms Cars
03 03 02
+ STUDY

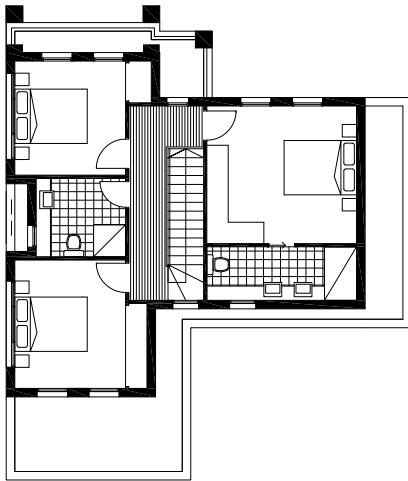
Total^{m²}

273.58

Ground Floor



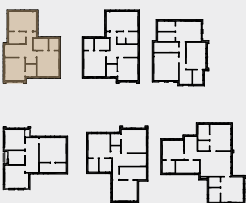
First Floor



Townhouse Number

04

Key Plan

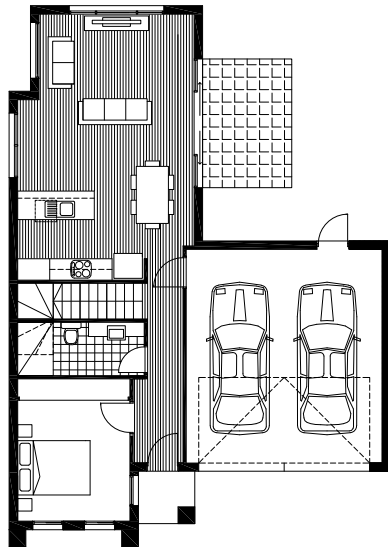


Bedrooms Bathrooms Cars
04 03 02

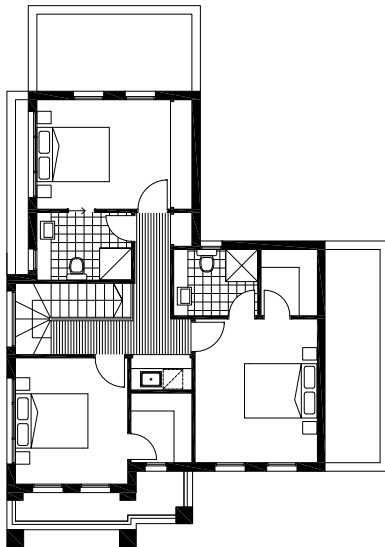
Total^{m²}

279.62

Ground Floor



First Floor



Townhouse Number

05

Key Plan

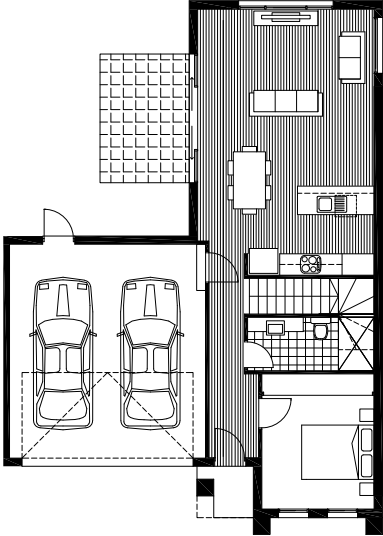


Bedrooms Bathrooms Cars
04 03 02

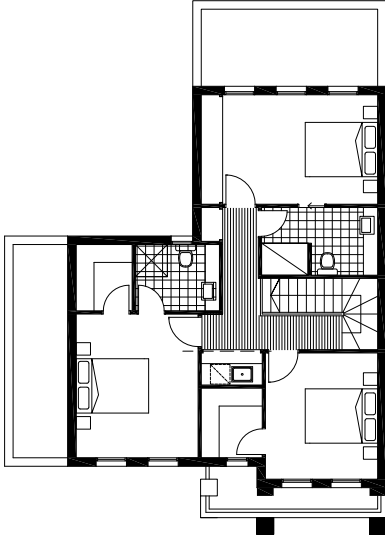
Total^{m²}

250.73

Ground Floor



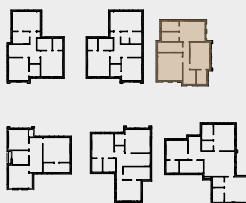
First Floor



Townhouse Number

06

Key Plan

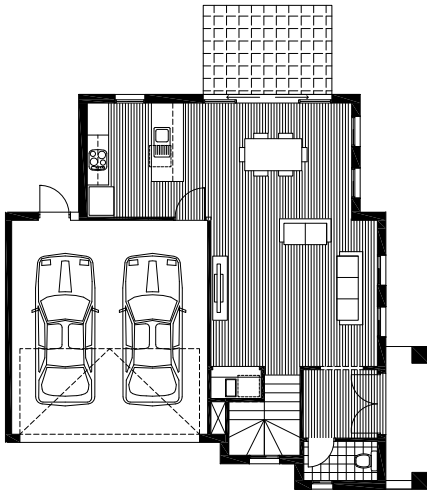


Bedrooms Bathrooms Cars
03 02 02

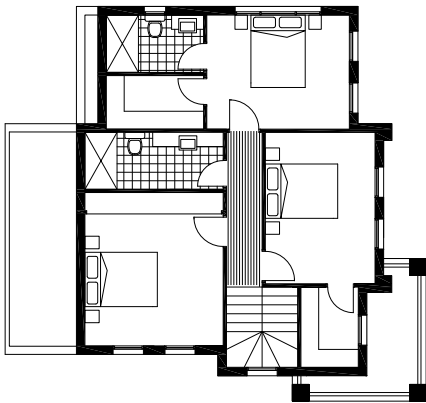
Total ^{m²}

376.69

Ground Floor



First Floor



LIVE IT
DONT JUST DREAM IT



PRESTIGE

In a market that verges on generic, Adepto Co takes pride in building bespoke luxury developments designed with the owner occupiers in mind. Adepto Co projects are timeless and are built with quality to last for generations to come.

Large functional living spaces, quality interiors, premium appliances, large preparation areas makes Adepto Co homes in high demand.





ADEPTO CO

The Developers

Founded in 2010 by brothers David and Marc Tricarico and Bruno and Vince Orlando Adepto Co develops luxury boutique developments for generational living. Adepto Co ensures a unique identity for each of its projects so it becomes an icon in its respective neighborhood.

ALIA HOMES

The Builders

"Building is our passion"
Alia Homes is an innovative construction company with the desire to exceed expectations. Alia is committed to transform plans into reality with residences that owners are proud to call home.



COLAB DESIGN STUDIO

The Interior Designers

Anna Drummond and Trish Turner founders of CoLAB Design Studio. Before CoLAB the pair were senior designers at the award winning global firm Woods Bagot. They are both meticulous in their work and have been involved in 40 projects over just 4 years.

IKONOMIDIS REID

The Architects

Ikonomidis Reid was formed in 2000 and has completed over 900 building projects for both developers and home owners with an emphasis on medium density housing. It also conducts an independent energy rating business which has serviced over 2000 projects. They have a strong focus on multi unit dwellings individual houses and industrial buildings.



